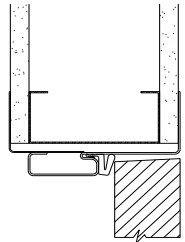
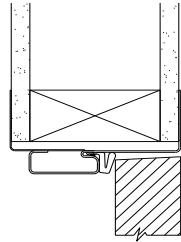


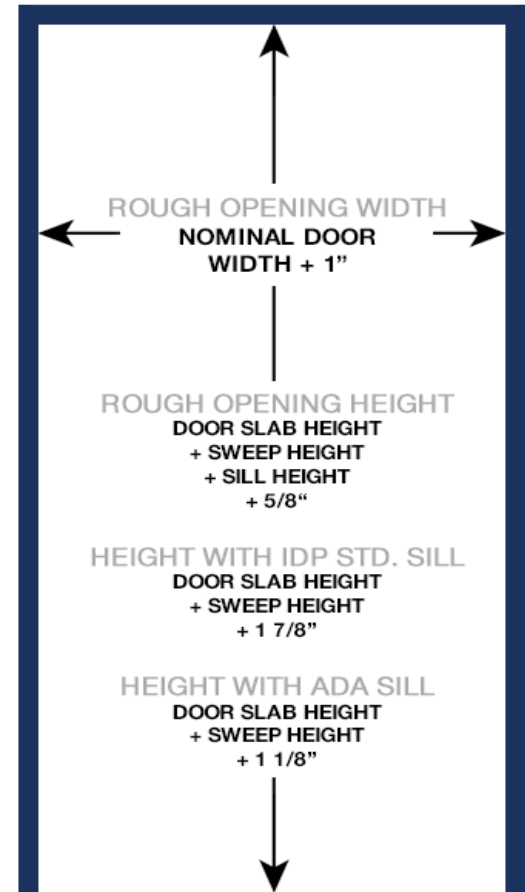
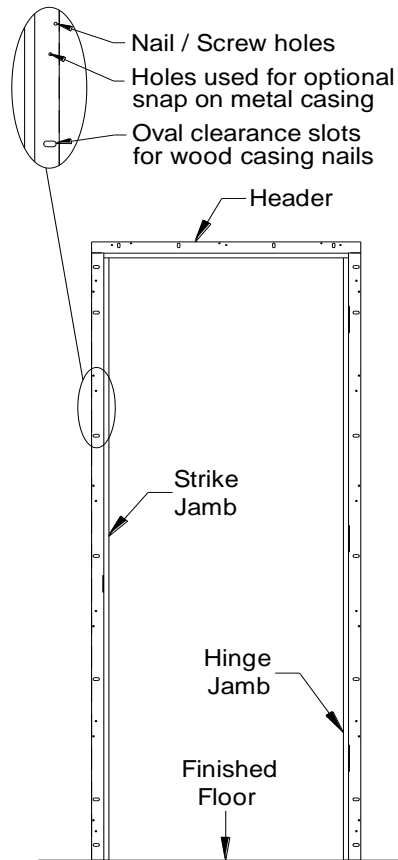
# IDP Inc. K2A-SERIES KERF ADJUSTABLE FRAME INSTALL and ROUGH OPENING SIZING



Wall Construction  
Metal Studs & Drywall  
Recommended Fasteners:  
1-1/4" (min.) Type  
"S" Bugle Head Self-  
Tapping Screws  
(not provided)



Wall Construction  
Wood Studs & Drywall  
1-1/4" (min.)  
Drywall screws  
Coarse thread  
(Provided)  
or  
6d common nails



Note: For fire rated frames fasteners must be at least 1/2" longer than the thickness of the drywall or sheathing.



INTERNATIONAL DOOR PRODUCTS

IDP Inc.  
21300 W. 8 Mile Rd.  
Southfield, MI 48075

Phone: 248-352-0044  
Fax: 248-352-4222  
www.idpframes.com

PROJECT:

JOB NO.

SHEET:

OF: